

Application Share: How to...



North Dakota University System
2009



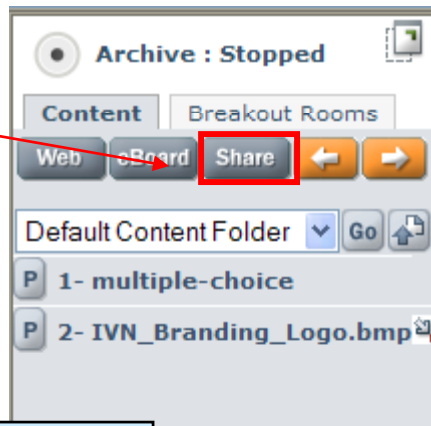
Presenter's Console: Application Share

Application Share can be used for:

- Sharing a document or another software program. Examples: Share a Word document or Excel spreadsheet
- Demonstrating actions by the presenter or student of their desktop.

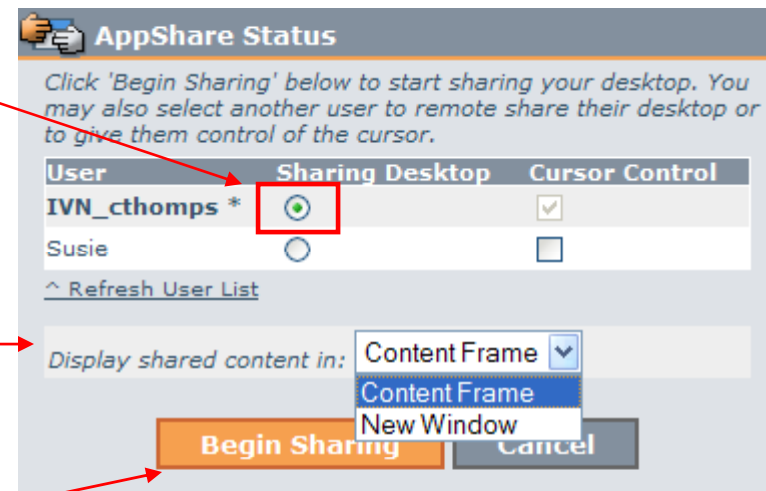
Application Share: How to ...

STEP 1: Click on "Share" in the presenter's console



STEP 2:

- Determine whose desktop you are sharing or whether you just want to provide Cursor Control.
- Select where to display – current Content Frame or open a New Window
- Click on Begin Sharing

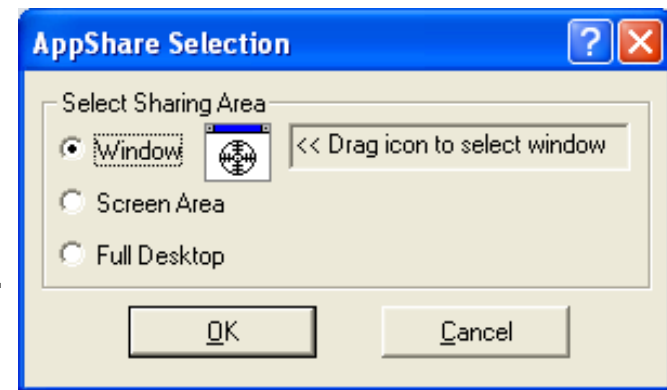


Application Share: Content View

If you selected to view in Content Frame, you have 3 options:

- **Window:** allows you to show one window on your desktop.
- **Screen Area:** preferred. You will be able to set the size of your viewing area. A draw box will appear – drag the lines around the area you wish to share.
- **Full desktop:** your entire desktop will be in view

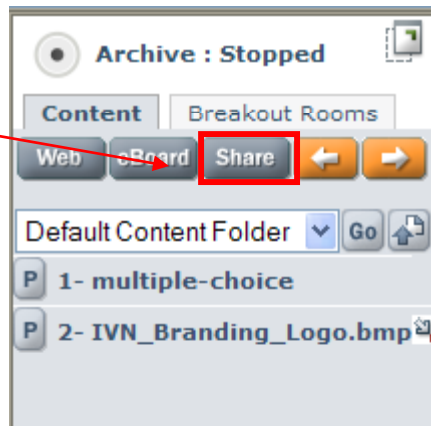
Select OK, when ready.



TIPS: Have the document you wish to share open on your desktop before beginning App Share. Ask students if they can see the document.

Application Share: End Sharing

STEP 1: Click on “Share” in the presenter’s console



STEP 2: Click on Cancel

